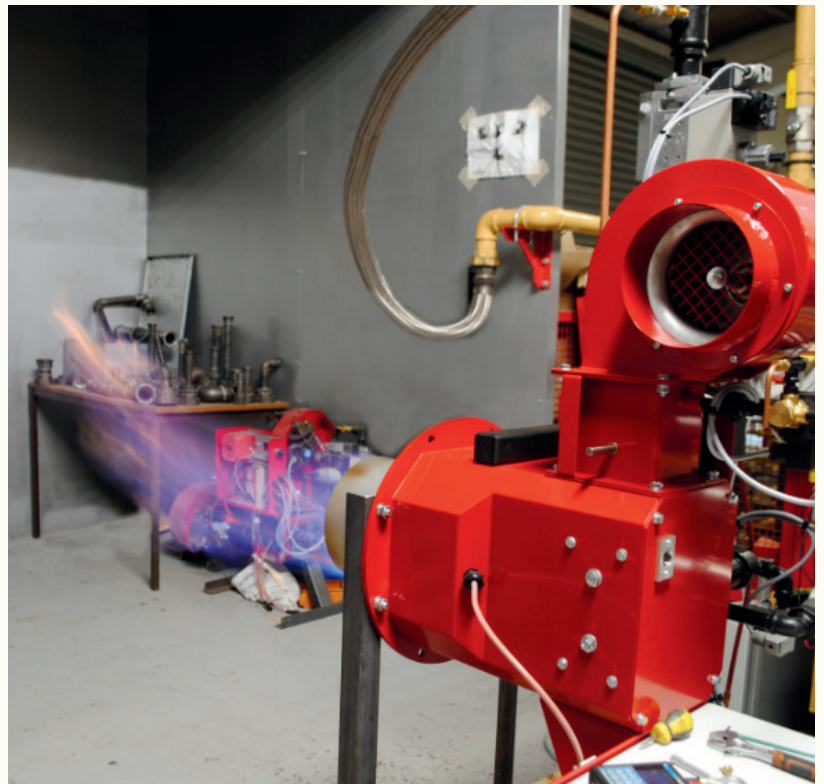


# PC PACKAGE BURNER

The 'PC' series of burners are packaged units designed to suit virtually all types of industrial gas fired applications. The PC burner range is designed to always operate with approximately 30% excess combustion air.



## Typical Applications

- Pulp & Paper Dryers
- Industrial Dryers
- Industrial Ovens
- Food Ovens
- Oxidisers
- Stenters
- Lehrs
- Spray Booths
- Printing Lines
- Rotary dryers

## Technical Feature

- Turndown Ratio : 30:1
- Capacity : 60kW to 14000kW
- Fuel Types : Suitable for operation on most gaseous fuels.