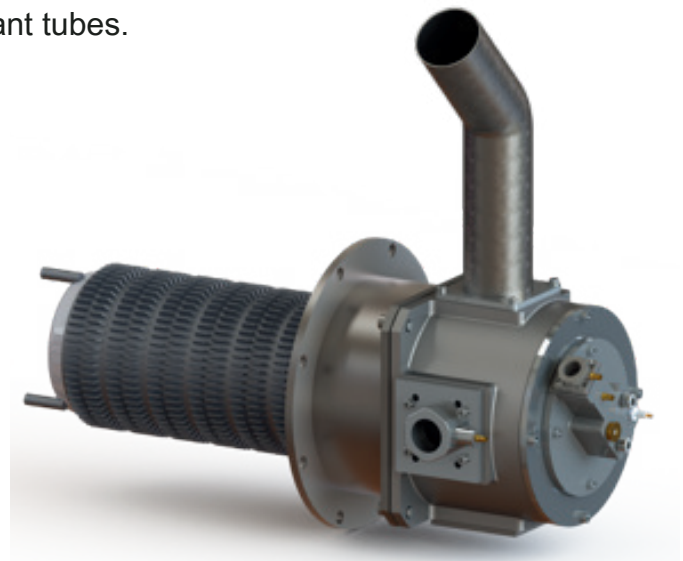
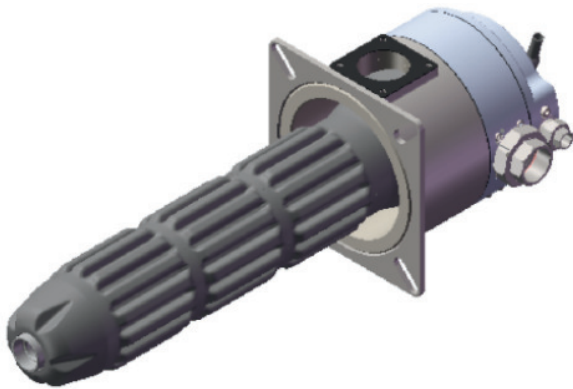


# SELF RECUPERATIVE

GTS Comtherm Effimax Self Recuperative Burners are high velocity energy efficient advanced generation burners. These burners are equipped with integrated Heat Exchanger for recovering maximum heat from the waste flue gases generated due to the combustion process. It is used in wide range of High Temperature applications requiring energy savings and clean combustion. Heat exchangers for these burners are made of either Metallic or Ceramic or sometimes combination of Metallic and Ceramic. It can be used for Open firing/Direct Firing or Indirect Firing inside of a Single ended/P-Tube or PP-Tube Metallic or Ceramic Radiant tubes.



## Typical Features

- Capacity: 30 kW to 300 Kw
- Fuel: LPG/Natural Gas/COG/Syn.Gas
- Max. Furnace Temp (Ceramic Heat Exchanger) : 1300°C
- Max. Furnace Temp (Metallic Heat Exchanger) : 1000°C
- Flame Safety : One Common electrode for Ignition & Flame Sensing. UV Cell option is available.
- Burner Control : ON/OFF or Pulse Firing
- Recuperator Type : Metallic or Ceramic (SiSiC)
- Recuperator Lengths available(mm): 390 to 690

**Customized Solution: Flat Flame configuration available on request**

## Typical Applications

- Strip Line Furnaces (CGL / CAL)
- Stainless Steel A&P Lines
- Car Bottom Furnaces
- Roller Hearth Furnaces
- Mesh Belt Furnaces
- Carburizing & Tempering Furnaces
- Forge Furnaces
- Pit Type Furnaces & other heat treatment furnaces

