

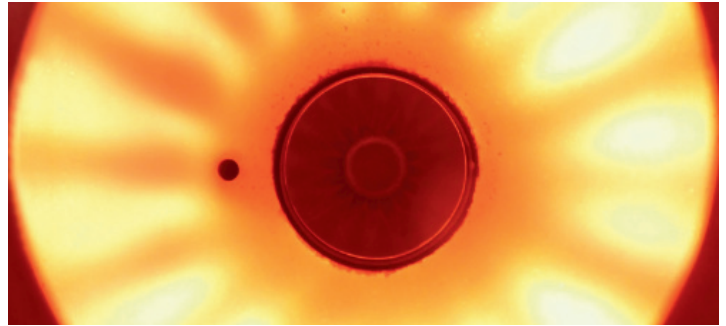
RADIANT TUBE BURNER

The GTS Comtherm Radiant Tube RTB series burners are gas burners with outer heat resistant burner tube used for indirect heating inside of Radiant Tube used for transfer of heat to the process. Radiant Tubes using RTB Burners are generally U or W shape.

The RTB burners are "Nozzle Mix" type burners. The fuel gas and combustion air is mixed at the combustion head to avoid flashbacks. The burner is suitable for working with or without the Plug-In Type Recuperator.

Typical Applications

- Annealing furnaces
- Galvanizing furnaces
- Homogenizing furnaces
- Tunnel Ovens & Furnaces
- All types of Heat Treatment furnaces



Technical Features

- Burner Capacity Range: 30 kW to 300 kW
- Fuel: LPG/Propane/Natural Gas/ Others
- Air & Gas Pressure at Burner Inlet: 45 mbar
- Max. Preheated Air Temperature: 450°C
- Low pollutant emission
- High Flow Turn down range

Material Composition

- Burner Body : Cast Iron (Other Material options available on request)
- Gas Adjuster (Tuning Valve) : Cast Iron
- Burner Flame Tube : SS 304 / SS 310
- Diffuser & Combustion Head : SS 310
- Mounting Flange : Carbon Steel
- Orifices : Carbon Steel
- Peep Sights & Pressure Taps: Brass

